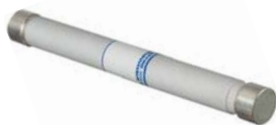


10 x 85



| Current (A) | Voltage | Cat.Number w/o striker | Ref. number w/o striker | Pckg |
|-------------|---------|------------------------|-------------------------|------|
| 0,125 | 1500 | 10GC15V0,125 | S093327J | 10 |
| 0,16 | 1500 | 10GC15V0,16 | T093328J | 10 |
| 0,25 | 1500 | 10GC15V0,25 | V093329J | 10 |
| 0,315 | 1500 | 10GC15V0,315 | W093330J | 10 |
| 0,4 | 1500 | 10GC15V0,4 | X093331J | 10 |
| 0,5 | 1500 | 10GC15V0,5 | Z093333J | 10 |
| 0,63 | 1500 | 10GC15V0,63 | A093334J | 10 |
| 0,8 | 1500 | 10GC15V0,8 | B093335J | 10 |
| 1 | 1500 | 10GC15V1 | A093426J | 10 |
| 1,6 | 1500 | 10GC15V1,6 | B093427J | 10 |
| 2 | 1500 | 10GC15V2 | C093428J | 10 |
| 3,15 | 1500 | 10GC15V3,15 | D093429J | 10 |
| 4 | 1500 | 10GC15V4 | E093430J | 10 |
| 5 | 1500 | 10GC15V5 | Y093654J | 10 |
| 6,3 | 1500 | 10GC15V6,3 | Z093655J | 10 |
| 8 | 1500 | 10GC15V8 | A093656J | 10 |
| 10 | 1500 | 10GC15V10 | B093657J | 10 |
| 12 | 1500 | 10GC15V12 | C093658J | 10 |
| 16 | 1500 | 10GC15V16 | F093431J | 10 |
| 20 | 1500 | 10GC15V20 | L220028J | 10 |

10 x 180



| Current (A) | Voltage | Cat.Number w/o striker | Ref. number w/o striker | Pckg |
|-------------|---------|------------------------|-------------------------|------|
| 0,16 | 3200 | 10GB32V0,16 | E081838J | 10 |
| 0,315 | 3200 | 10GB32V0,315 | F081839J | 10 |
| 0,5 | 3200 | 10GB32V0,5 | G081840J | 10 |
| 0,8 | 3200 | 10GB32V0,8 | H081841J | 10 |
| 1 | 3200 | 10GB32V1 | P089621J | 10 |
| 1,25 | 3200 | 10GB32V1,25 | R078744J | 10 |
| 1,6 | 3200 | 10GB32V1,6 | N081409J | 10 |
| 2 | 3200 | 10GB32V2 | Q089622J | 10 |
| 2,5 | 3200 | 10GB32V2,5 | S078745J | 10 |
| 3,15 | 3200 | 10GB32V3,15 | M081845J | 10 |
| 4 | 3200 | 10GB32V4 | R089623J | 10 |
| 5 | 3200 | 10GB32V5 | M087733J | 10 |
| 6 | 3200 | 10AB32V6 | S089624J | 10 |
| 8 | 3200 | 10AB32V8 | T089625J | 10 |
| 10 | 3200 | 10AB32V10 | V089626J | 10 |
| 12 | 3200 | 10AB32V12 | W089627J | 10 |

10 x 180



| Current (A) | Voltage | Cat.Number w/o striker | Ref. number w/o striker | Pckg |
|-------------|---------|------------------------|-------------------------|------|
| 0,16 | 5500 | 10GB55V0,16 | A093035J | 10 |
| 0,315 | 5500 | 10GB55V0,315 | B093036J | 10 |
| 0,5 | 5500 | 10GB55V0,5 | W081140J | 10 |
| 0,8 | 5500 | 10GB55V0,8 | V081139J | 10 |
| 1 | 5500 | 10GB55V1 | T081138J | 10 |
| 1,25 | 5500 | 10GB55V1,25 | N093162J | 10 |
| 1,6 | 5500 | 10GB55V1,6 | S081137J | 10 |
| 2 | 5500 | 10GB55V2 | R081136J | 10 |
| 2,5 | 5500 | 10GB55V2,5 | P093163J | 10 |
| 3,15 | 5500 | 10GB55V3,15 | Q081135J | 10 |
| 3,5 | 5500 | 10GB55V3,5 | P081134J | 10 |
| 4 | 5500 | 10GB55V4 | N081133J | 10 |

36 x 190

| Current (A) | Voltage | Cat. Number w/o striker | Ref. number w/o striker | Cat. Number with striker | Ref. number with striker | Pckg |
|------------------------|---------|-------------------------|-------------------------|--------------------------|--------------------------|------|
| 2 | 3200 | 36GD32V2 | P081801A | | | 1 |
| 3,15 | 3200 | 36GD32V3,15 | Q081802A | | | 1 |
| 4 | 3200 | 36GD32V4 | R081803A | | | 1 |
| 5 | 3200 | 36GD32V5 | S081804A | | | 1 |
| 6,3 | 3200 | 36GD32V6,3 | T081805A | 36GD32V6,3 | K081797A | 1 |
| 8 | 3200 | 36GD32V8 | V081806A | 36GD32V8 | J081796A | 1 |
| 10 | 3200 | 36GD32V10 | W081807A | 36GD32V10 | H081795A | 1 |
| 12 | 3200 | 36GD32V12 | X081808A | 36GD32V12 | G081794A | 1 |
| 16 | 3200 | 36GD32V16 | Y081809A | 36GD32V16 | F081793A | 1 |
| 20 | 3200 | 36GD32V20 | Z081810A | 36GD32V20 | E081792A | 1 |
| 25 | 3200 | 36GD32V25 | A081811A | 36GD32V25 | D081791A | 1 |
| 32 | 3200 | 36GD320V32 | B081812A | 36GD320V32 | C081790A | 1 |
| 40 | 3200 | 36GD32V40 | C081813A | 36GD32V40 | B081789A | 1 |
| 50 | 3200 | 36GD32V50 | D081814A | 36GD32V50 | A081788A | 1 |
| 63 | 3200 | 36GD32V63 | L081798A | 36GD32V63 | Z081787A | 1 |
| 80 | 3200 | 36GD32V80 | M081799A | 36GD32V80 | Y081786A | 1 |
| 100 | 3200 | 36GD32V100 | N081800A | 36GD32V100 | X081785A | 1 |
| Microswitch(1 contact) | | | | MC1-5NFLEX | E098674A | 1 |



36 x 250

| Current (A) | Voltage | Cat. Number w/o striker | Ref. number w/o striker | Cat. Number with striker | Ref. number with striker | Pckg |
|-------------------------|---------|-------------------------|-------------------------|--------------------------|--------------------------|------|
| 2 | 5500 | 36GB55V2 | V081622A | | | 1 |
| 3,15 | 5500 | 36GB55V20 | A081397A | | | 1 |
| 4 | 5500 | 36GB55V4 | T081621A | | | 1 |
| 5 | 5500 | 36GB55V5 | S081620A | | | 1 |
| 6 | 5500 | 36GB55V6 | R081619A | 36GB55V6P | G081610A | 1 |
| 8 | 5500 | 36GB55V8 | Q081618A | 36GB55V8P | F081609A | 1 |
| 10 | 5500 | 36GB55V10 | P081617A | 36GB55V10P | E081608A | 1 |
| 12 | 5500 | 36GB55V12 | N081616A | 36GB55V12P | D081607A | 1 |
| 16 | 5500 | 36GB55V16 | M081615A | 36GB55V16P | C081606A | 1 |
| 20 | 5500 | 36GJB55V20 | L081614A | 36GJB55V20P | E078802A | 1 |
| 25 | 5500 | 36GJB55V25 | Q078789A | 36GJB55V25P | F078803A | 1 |
| 32 | 5500 | 36GJB55V32 | R078790A | 36GJB55V32P | G078804A | 1 |
| 40 | 5500 | 36GJB55V40 | S078791A | 36GJB55V40P | H078805A | 1 |
| 50 | 5500 | 36GJB55V50 | T078792A | 36GJB55V50P | J078806A | 1 |
| 63 | 5500 | 36AJB55V63 | V078793A | 36AJB55V63P | K078807A | 1 |
| 75 | 5500 | 36AJB55V75 | W078794A | 36AJB55V75P | L078808A | 1 |
| Microswitch (1 contact) | | | | MC1-5NFLEX | E098674A | 1 |
| Microswitch(2 contacts) | | | | MC1-9NFLEXQ | F098675A | 1 |

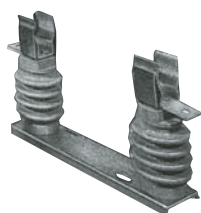


55 x 259



| Current (A) | Voltage | Cat.Number w/o striker | Ref. number w/o striker | Cat.Number with striker | Ref. number with striker | Pckg | |
|--------------------------|---------|------------------------|-------------------------|-------------------------|--------------------------|----------|---|
| 2 | 5500 | 55GD55V2 | S081505C | | | 3 | |
| 3,15 | 5500 | 55GD55V3,15 | S081390C | | | 3 | |
| 4 | 5500 | 55GD55V4 | R081504C | | | 3 | |
| 5 | 5500 | 55GD55V5 | Q081503C | | | 3 | |
| 6 | 5500 | 55GD55V6 | P081502C | 55GD55V6P | A081489C | 3 | |
| 8 | 5500 | 55GD55V8 | N081501C | 55GD55V8P | Z081488C | 3 | |
| 10 | 5500 | 55GD55V10 | M081500C | 55GD55V10P | Y081487C | 3 | |
| 12 | 5500 | 55GD55V12 | L081499C | 55GD55V12P | X081486C | 3 | |
| 16 | 5500 | 55GD55V16 | K081498C | 55GD55V16P | W081485C | 3 | |
| 20 | 5500 | 55GD55V20 | J081497C | 55GD55V20P | V081484C | 3 | |
| 25 | 5500 | 55GD55V25 | H081496C | 55GD55V25P | T081483C | 3 | |
| 32 | 5500 | 55GD55V32 | G081495C | 55GD55V32P | S081482C | 3 | |
| 40 | 5500 | 55GD55V40 | F081494C | 55GD55V40P | R081481C | 3 | |
| 50 | 5500 | 55GD55V50 | E081493C | 55GD55V50P | Q081480C | 3 | |
| 63 | 5500 | 55GD55V63 | D081492C | 55GD55V63P | P081479C | 3 | |
| 80 | 5500 | 55GD55V80 | C081491C | 55GD55V80P | N081478C | 3 | |
| 100 | 5500 | 55GD55V100 | B081490C | 55GD55V100P | M081477C | 3 | |
| Microswitch (1 contact) | | | | | MC1-5NFLEX | E092694A | 1 |
| Microswitch (2 contacts) | | | | | MC1-9NFLEXQ | F092695A | 1 |

MV fuse holders



| Fuse size | Voltage (V AC) | Fuse holder Cat.Number | Fuse holder Ref. numbe |
|-----------|----------------|------------------------|------------------------|
| 3200 | 10 x 180 | SI50-10-180 | S092706A |
| 5500 | 10 x 180 | SI85-36-190TRA | D092693A |
| 3200 | 36 x 190 | SI85-10-180 | C092738A |
| 5500 | 36 x 250 | SI85-36-250 | P092864A |
| 5500 | 55 x 259 | SI130-55-259 | X092227A |

Clips

| Size | Cat.Number | Ref.Number | Pack |
|----------------|--------------------|------------|------|
| MR10 + ressort | MR10RESSORT | B098004L | 20 |
| MR36 + ressort | MR36R | M091275A | 1 |
| MR55 + ressort | MR55R | L078969A | 1 |

Medium Voltage – Size 55 x 520 – UTE French utility standards compliant

| Voltage (V) | Current (A) | Set of 3 fuses | EDF part number | Cat.number w/o striker | Ref. number w/o striker | Cat.number with striker | Ref. number with striker | Pckg |
|-------------|-------------|----------------|-----------------|------------------------|-------------------------|-------------------------|--------------------------|------|
| 24 | 6,3 | 1 | 73.02.132 | LOT-FR240V6,3 | A210795A | LOT-FR240V6,3P | G227430A | 1 |
| 24 | 16 | 1 | 73.02.133 | LOT-FR240V16 | B210796A | LOT-FR240V16P | H227431A | 1 |
| 24 | 32 | 1 | - | LOT-FR240V32 | G226234A | LOT-FR240V32P | J227432A | 1 |
| 24 | 43 | 1 | 73.02.134 | LOT-FR240V43 | C210797A | LOT-FR240V43P | K227433A | 1 |
| 24 | 63 | 1 | 73.02.135 | LOT-FR240V63 | D210798A | LOT-FR240V63P | L227434A | 1 |