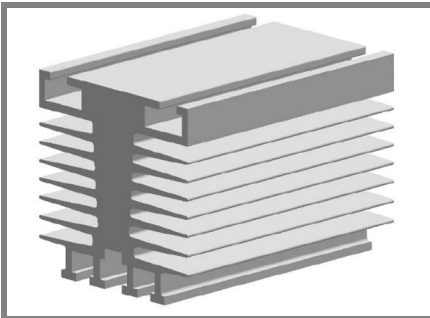


P 1,2



Heatsink

For stud devices

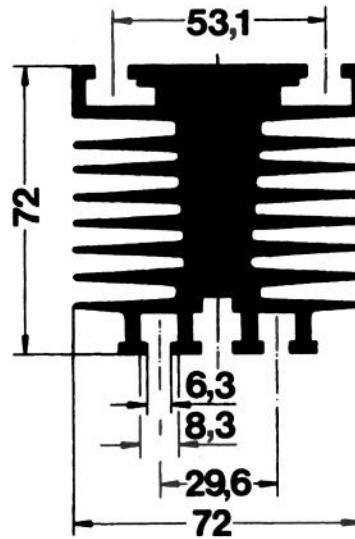
P 1,2

Features

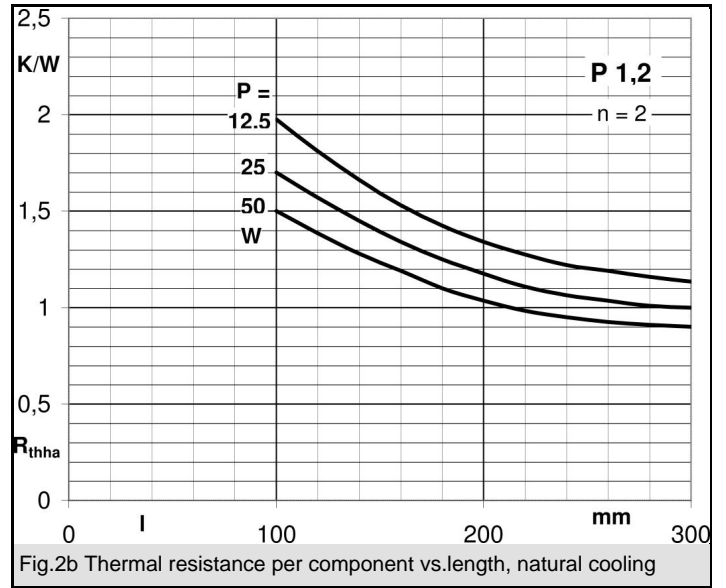
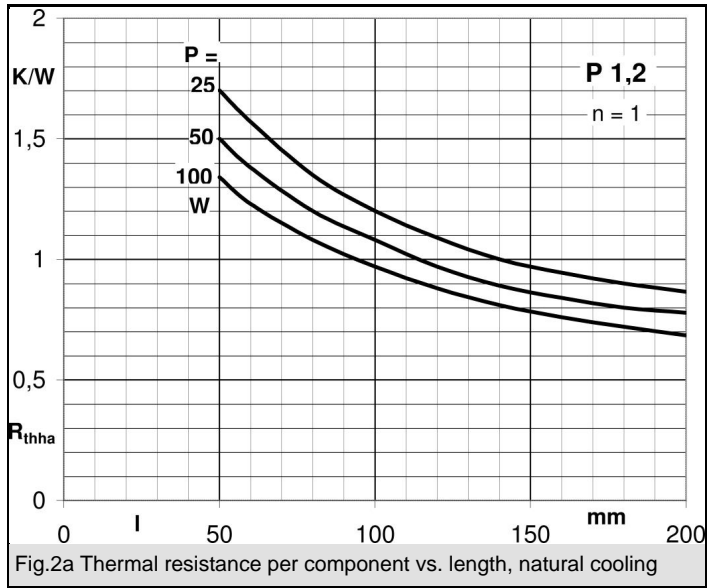
- Intended for stud mounted devices
- Available in various lengths
- Several devices can be mounted on a single heatsink

Standard lengths	n	b / d Ø mm	R_{thha} (P = 50W) natural cooling K/W	R_{thha} K/W	w kg
P 1,2/100	1		1,1		0,66
P 1,2/200	2		1,0		1,32

Dimensions in mm

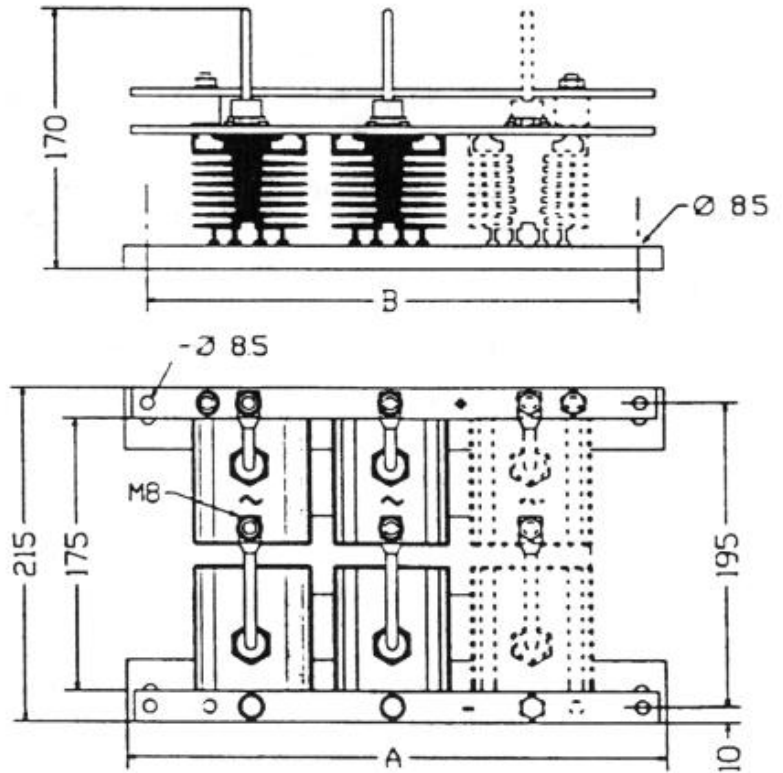


P 1,2 general profile dimensions (w = 6,6 kg/m)



P1.2/100

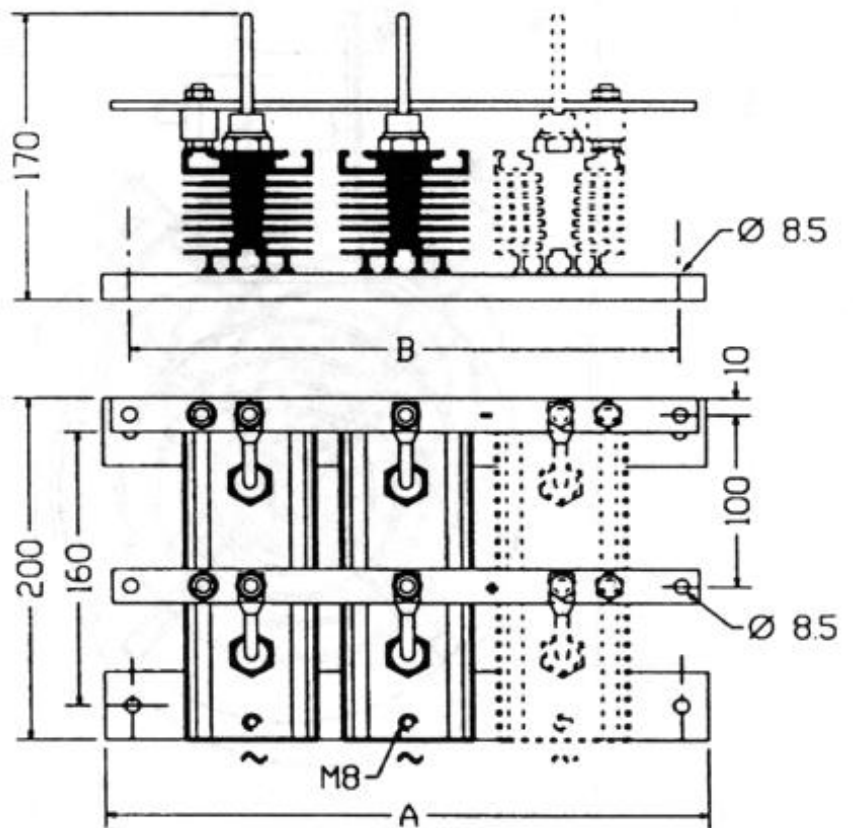
	B2 4 x P 1,2/100	B6 6 x P 1,2/100
A	249	336
B	219	306



1. Application example using 4x / 6x heatsink P 1,2/100 to give a single or three phase bridge rectifier stacks

P1.2/200

	B2 2 x P12/200	B6 3 x P12/200
A	249	336
B	219	306



2. Application example using 2x / 3x heatsink P 1,2/200 to give a single or three phase bridge rectifier stacks